

D Simply



If you want to throw the



lightly
C

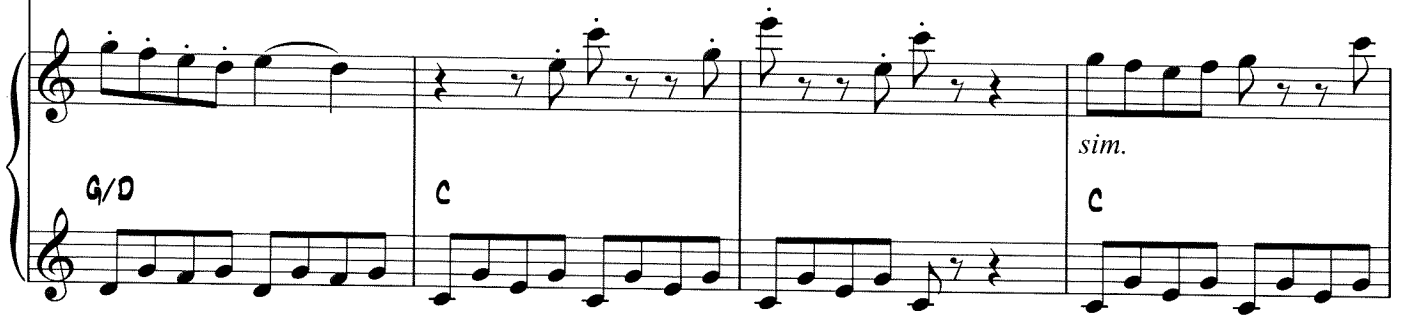
57



ham - mer for your count - ry You have to stay in-side the



mf



G/D

C

sim.

C

61

cir - cle all the time. If you want to make the

Chord progression: G/D, C, F

This system contains measures 61 through 64. The vocal line starts with a quarter rest, followed by a half note G4, a quarter note A4, a quarter rest, a quarter note B4, a half note C5, and a quarter note B4. The piano accompaniment features a steady eighth-note pattern in the right hand and a bass line in the left hand. Chords G/D, C, and F are indicated above the piano part.

65

team you don't need hap - pi - ness or self - es - teem, You just

Chord progression: D7/F#, C, A7/C#

This system contains measures 65 through 67. The vocal line begins with a quarter note D4, followed by quarter notes E4, F4, G4, A4, B4, and C5. The piano accompaniment continues with eighth-note patterns. Chords D7/F#, C, and A7/C# are indicated above the piano part.

68

need to keep your feet in - side the line.

Trunchbull: Sing, children!

Chord progression: Dm, G, C

This system contains measures 68 through 70. The vocal line starts with a quarter note D4, followed by quarter notes E4, F4, G4, A4, B4, and C5. The piano accompaniment features eighth-note patterns. Chords Dm, G, and C are indicated above the piano part. The instruction "Trunchbull: Sing, children!" is written above the vocal line in the final measure.

F

71

Trunchbull

2! 3! 4!

Top: Adult Kid:

mf

Bottom: Adult

p